



# European Spallation Source



Quality Management in a  
Research context



# The European Spallation Source Vision

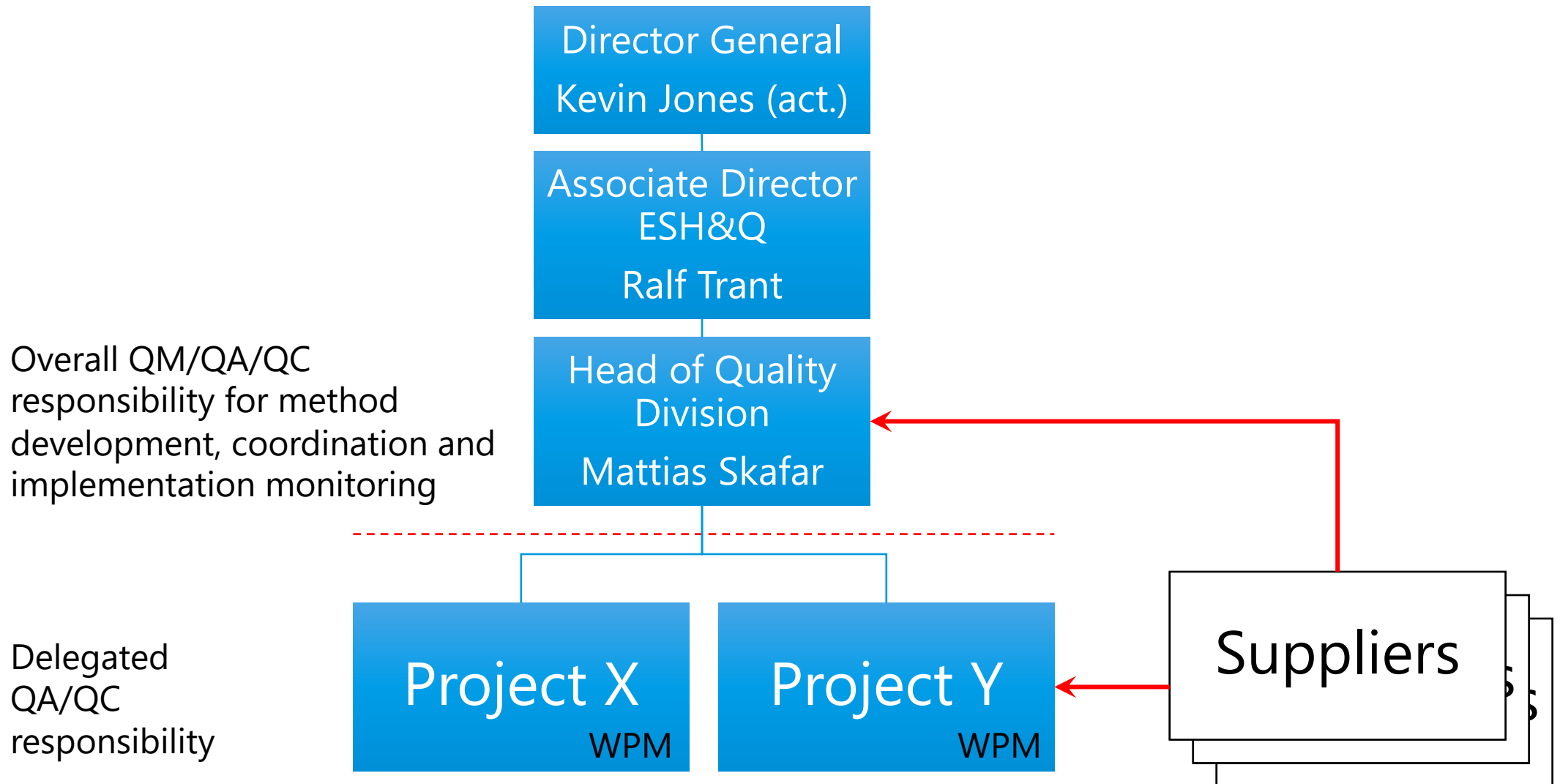


Address some of the most important societal challenges of our time by enabling scientific breakthroughs in research related to materials, energy, health and the environment.



# ESS Quality Program

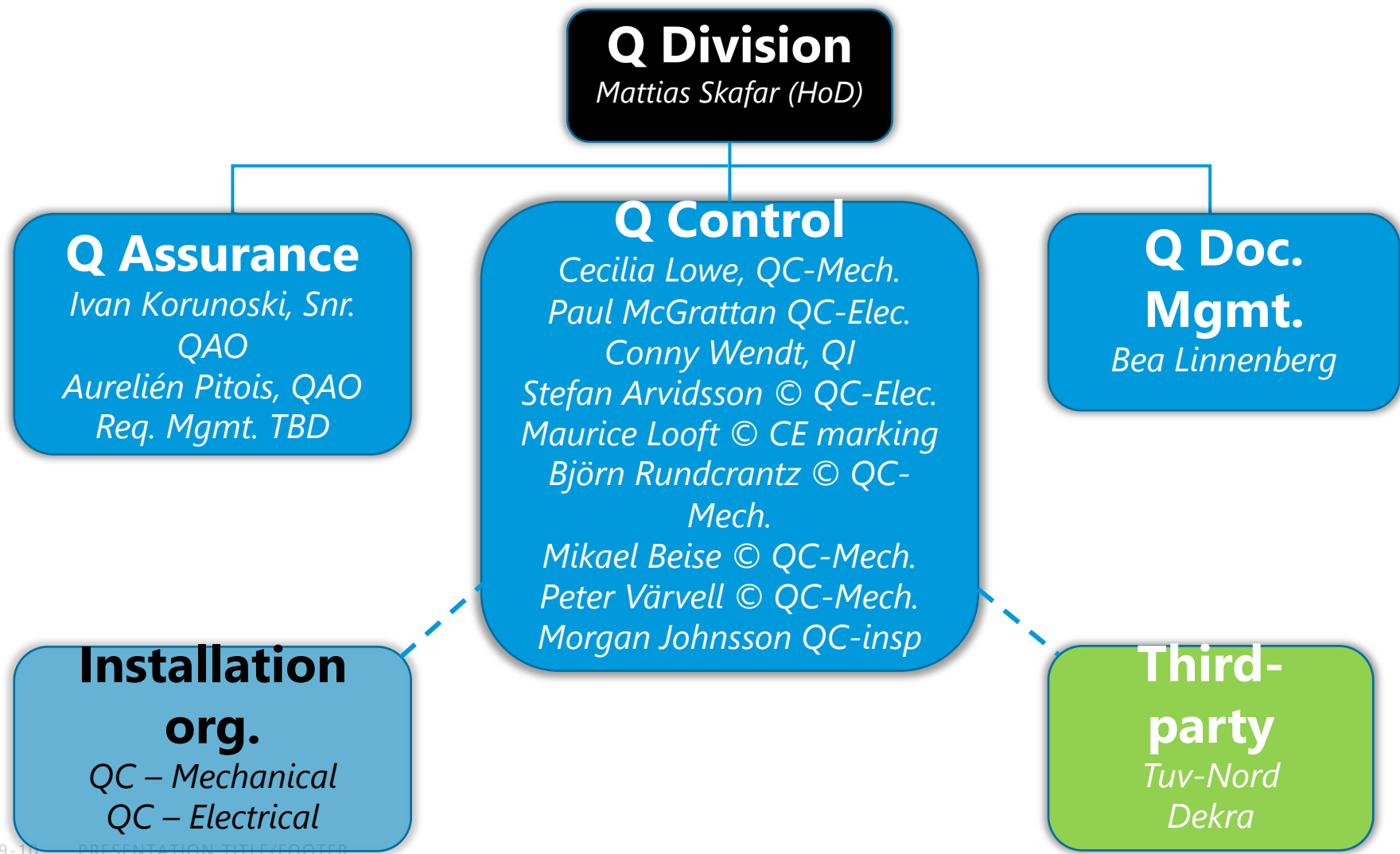
## Delegated responsibility





# Quality Division

## Organisation



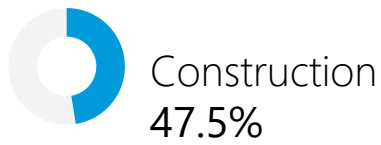




# A coalition of 13 European countries

## Host countries

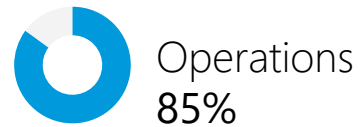
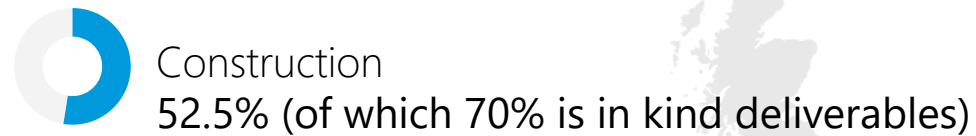
Sweden  
Denmark



Budget for construction  
1.84 billion euro.

## Non host member countries

Czech Republic, Estonia, France, Germany,  
Hungary, Italy, **Norway, Poland, Spain,**  
**Switzerland, United Kingdom.**



# Procurement Rules

## European Spallation Source ERIC Procurement Rules



ESS procurement governed by the European Spallation Source ERIC Procurement Rules.  
(as of 1 October 2015, before that ESS AB following LOU)

- Purpose:
  - To explain how ESS-ERIC conducts procurement
  - Apply to all procurement from ESS cash budget

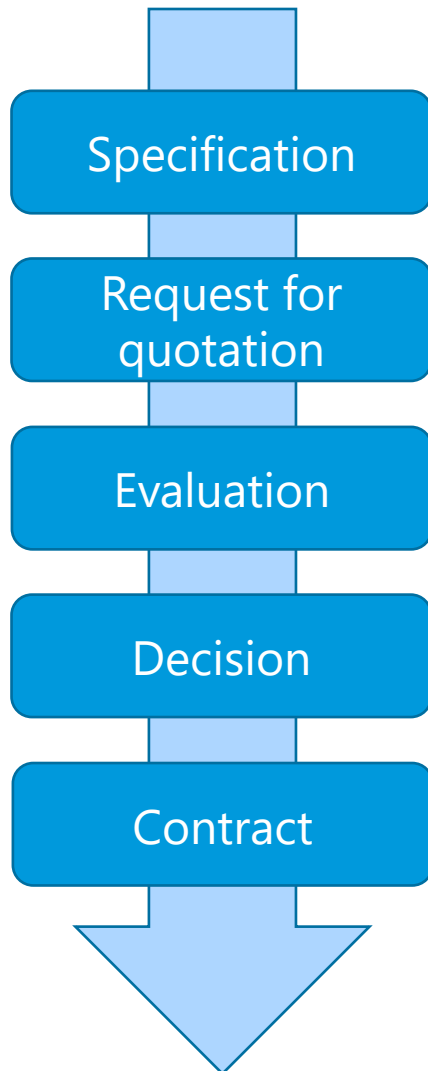
### Principles and objectives

- Following the EU treaty principles of:
  - Transparency, non-discrimination and competition
- Promoting the objectives of:
  - Value for money, publicity, integrity, innovation, sustainability
- Providing a process for appeal



# Guideline on Procurement Activities

In harmony with ESS ERIC Procurement Rules



**Preparing a procurement specification**

A procurement specification must include, at a minimum:

- Scope of work
- Performance / functional / technical requirements (avoiding brand names)
- **Quality assurance plan** or permits
- Service, including timeline and deliverables

In addition, consider including the following items:

- Design Approvals
- Interface points
- Related tools, technologies, sub-components, competencies or other similar considerations
- Inspection and test requirements
- Installation requirements – documentation package for cases with installation
- Documentation and training requirements
- Life-cycle requirements, such as maintenance, spare or ware part requirements
- Safety and health plan
- Project management plan
- Sustainability requirements
- Service and service level agreements requirements
- Warranty terms and conditions

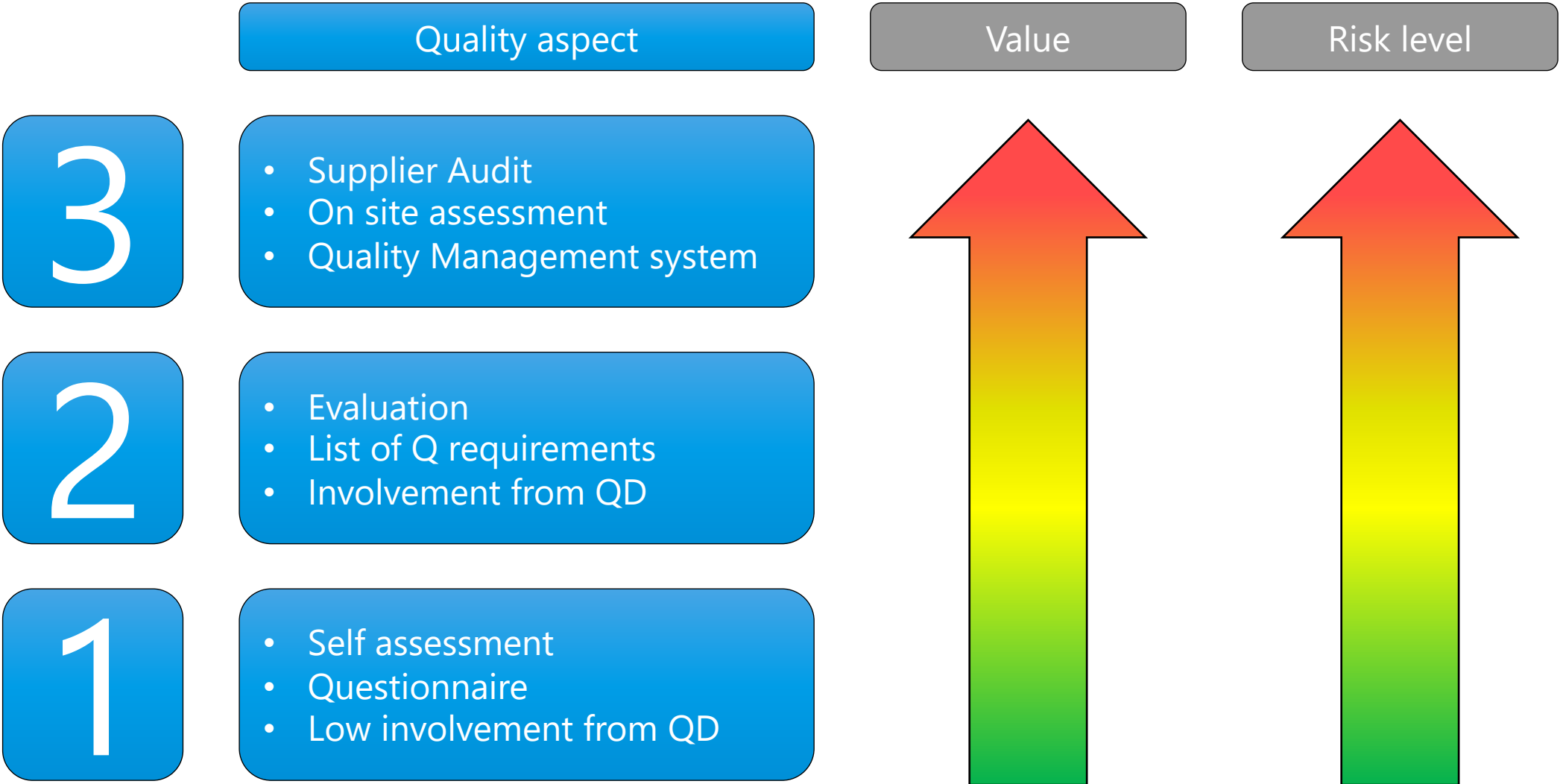
Specifications for **technical** procurements must be released in CHESS and approved by the work package leader and above line manager **at a minimum**. The CHESS number(s) should be included in the procurement request.

It is the responsibility of the person technical responsible for the procurement to ensure that all appropriate stakeholders have been consulted and approvals received.



# Supplier Assessment

Key suppliers (Graded approach)







# Project Quality Plan

Template introduction, based on ISO 10005 Guidelines for quality plans


Scope, input for PQP, go

**Project Re**  
Types of resources,

**Design and Develop**  
Reference to plan for

**Identification and T**  
Regulatory Requirement

**Monitoring & Measurement, Audits, Im**  
**PI**  
Measurement, Review & acceptance imple



EUROPEAN  
SPALLATION  
SOURCE

Document Type  
Document Number  
Date

Document Template  
ESS-0037830  
Apr 22, 2020

ESS TEMPLATE FOR PROJECT

	Name	Role/Title
Author	<<Name>>	<<Role/Title>>
Owner	<<Name>>	<<Role/Title>>
Reviewer	<<Name>>	<<Role/Title>>
Approver	<<Name>>	<<Role/Title>>

TABLE OF CONTENT

PAGE

1. SCOPE

4

2. INPUT TO THIS QUALITY PLAN

4

3. QUALITY GOALS

4

4. MANAGEMENT RESPONSIBILITIES WITHIN THIS QUALITY PLAN

4

5. DOCUMENTATION AND STORAGE OF DATA

4

6. CONTROL OF RECORDS WITHIN THIS QUALITY PLAN

5

7. RESOURCES

5

7.1. Materials

5

7.2. Human resources

5

7.3. Infrastructure and work environment

5

8. REQUIREMENTS

5

9. CUSTOMER COMMUNICATION

5

10. DESIGN AND DEVELOPMENT PROCESS

6

10.1. Control of Design and Development changes

6

11. PURCHASING

6

12. PRODUCTION AND SERVICE PROVISION

6

12.1. Installation and post-delivery activities

7

13. IDENTIFICATION AND TRACEABILITY

7

14. CUSTOMER PROPERTY

7

15. PRESERVATION OF PRODUCT

7

16. CONTROL OF NONCONFORMING PRODUCT

7

17. MONITORING AND MEASUREMENT

7

18. AUDITS

8

19. IMPLEMENTATION AND REVISION OF THE QUALITY PLAN

8

19.1. Review and acceptance of the quality plan

8

19.2. Implementation of the quality plan

8

19.3. Revision of the quality plan

9

19.4. Authorized deviations to this quality plan

9

20. GLOSSARY

9

21. REFERENCES

9

records

ords

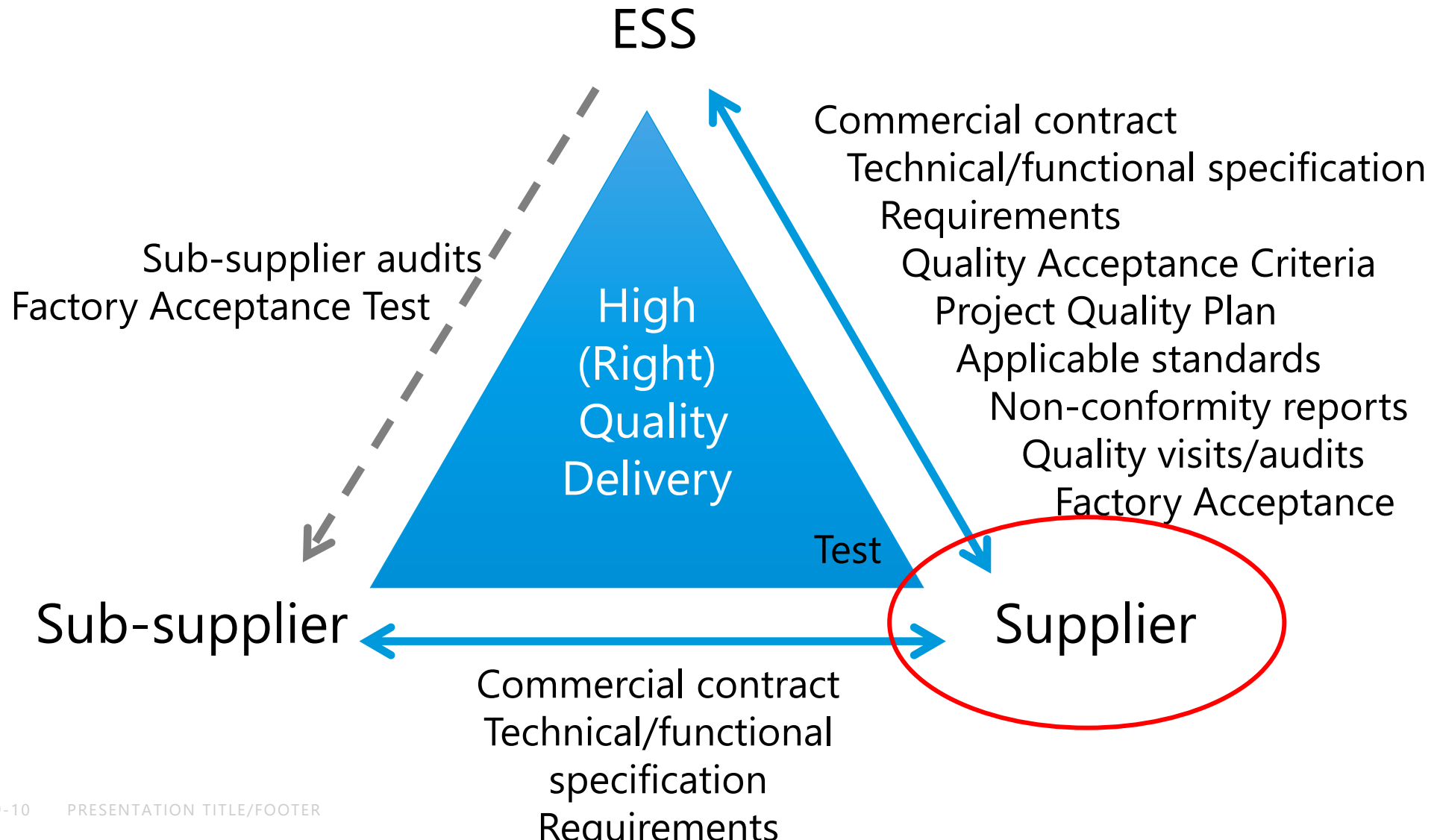
**Provision**  
chased

**Products**  
in place

**Quality**

# Quality Management

## Foundation



# Engineering/installation work

## Depending on contract

### Different contract types:

- Design, Build, Install

} And/or combination of these

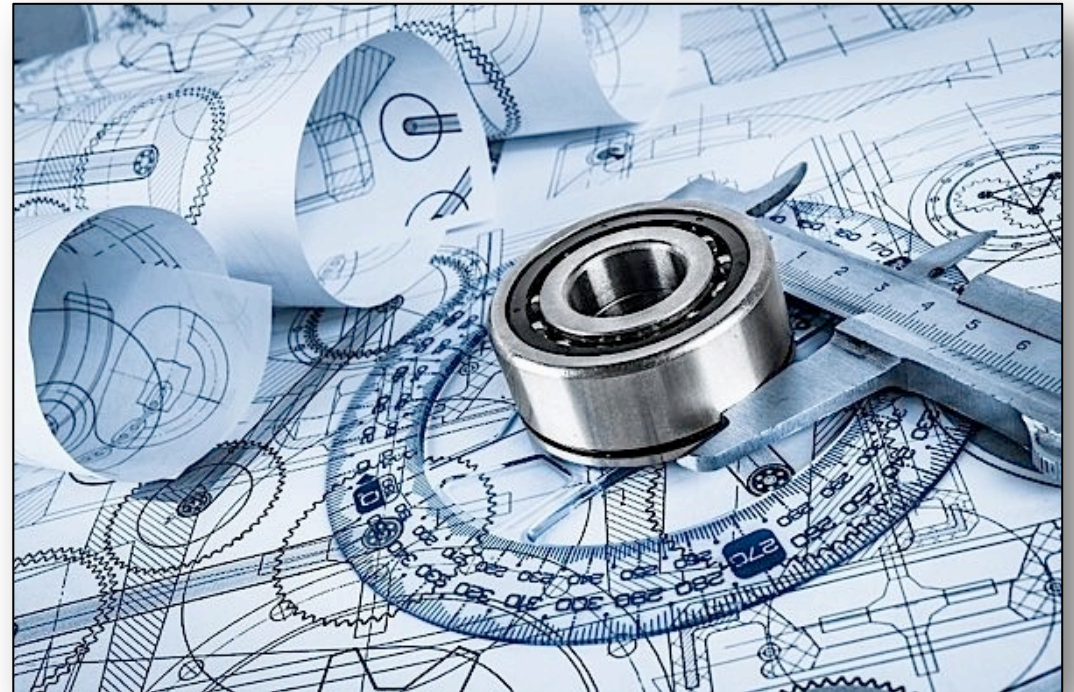
### Fundamental Quality focus areas:

- Requirement Management
- Configuration Management
- Verification & Validation

### This will give us the means to:

- Install,
- Operate,
- Maintain,
- Repair and update

} In a cost effective way



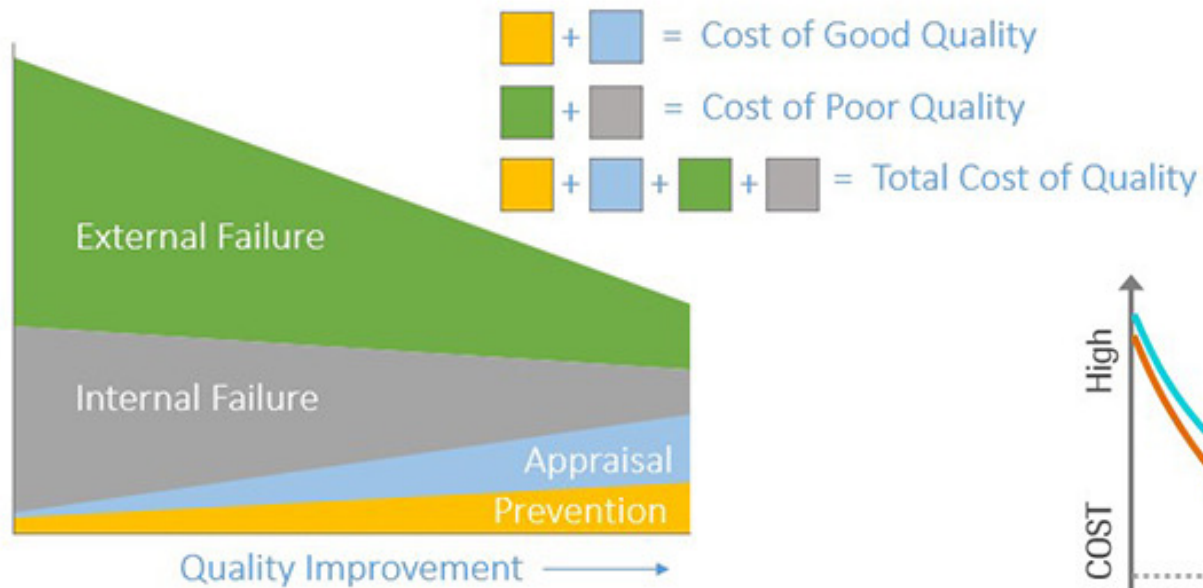


# ESS Quality Program

Finding the "sweet spot"



## Typical Relationship/Progression of Cost of Quality



Applied methods and practical quality work is of paramount importance

We have examples where the cost for replacing poor piping on a water skid was approximately the equivalent to 1 FTE.

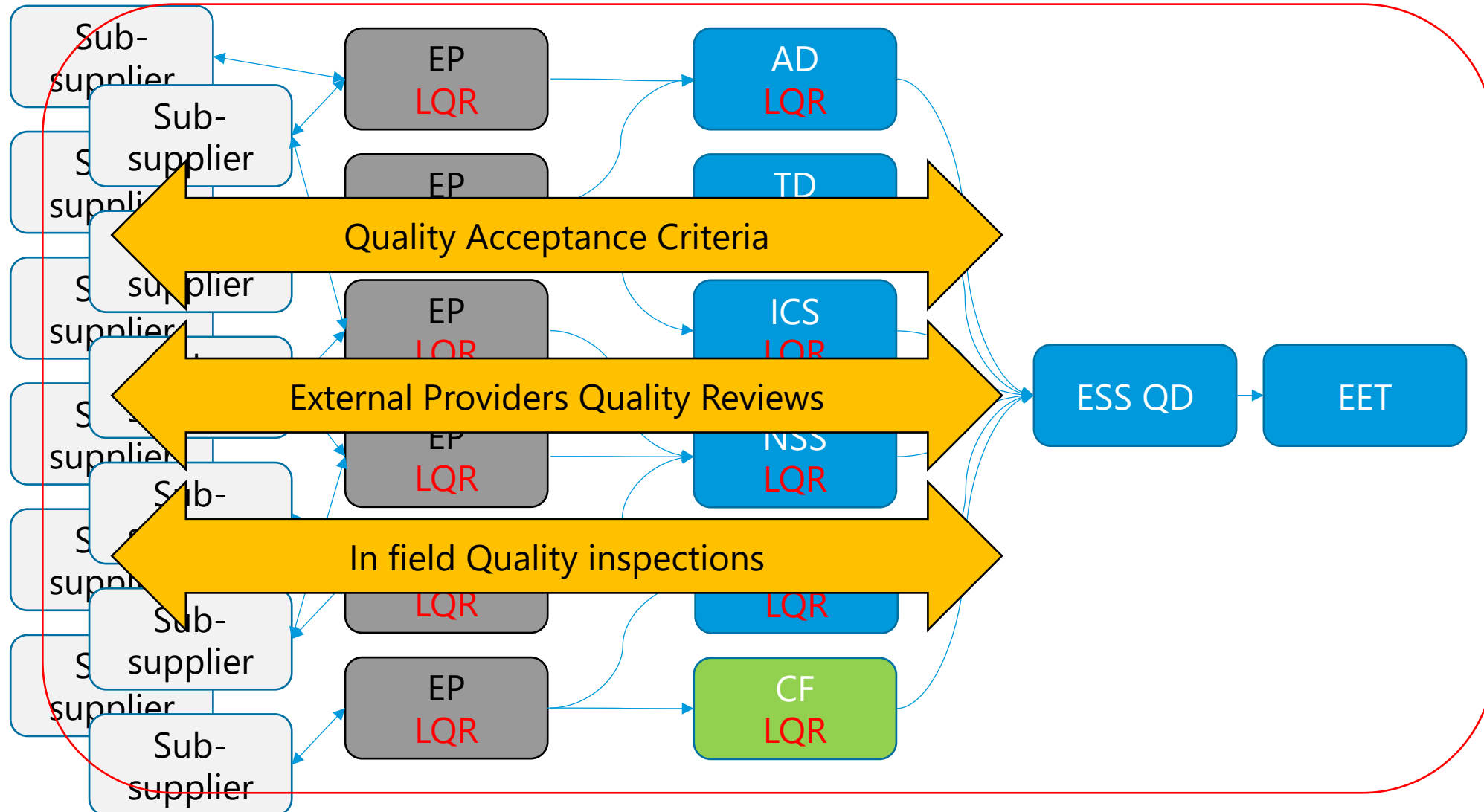


Source: <https://www.isixsigma.com/implementation/financial-analysis/cost-quality-not-only-failure-costs>

# ESS Quality Program

Proactive collaboration

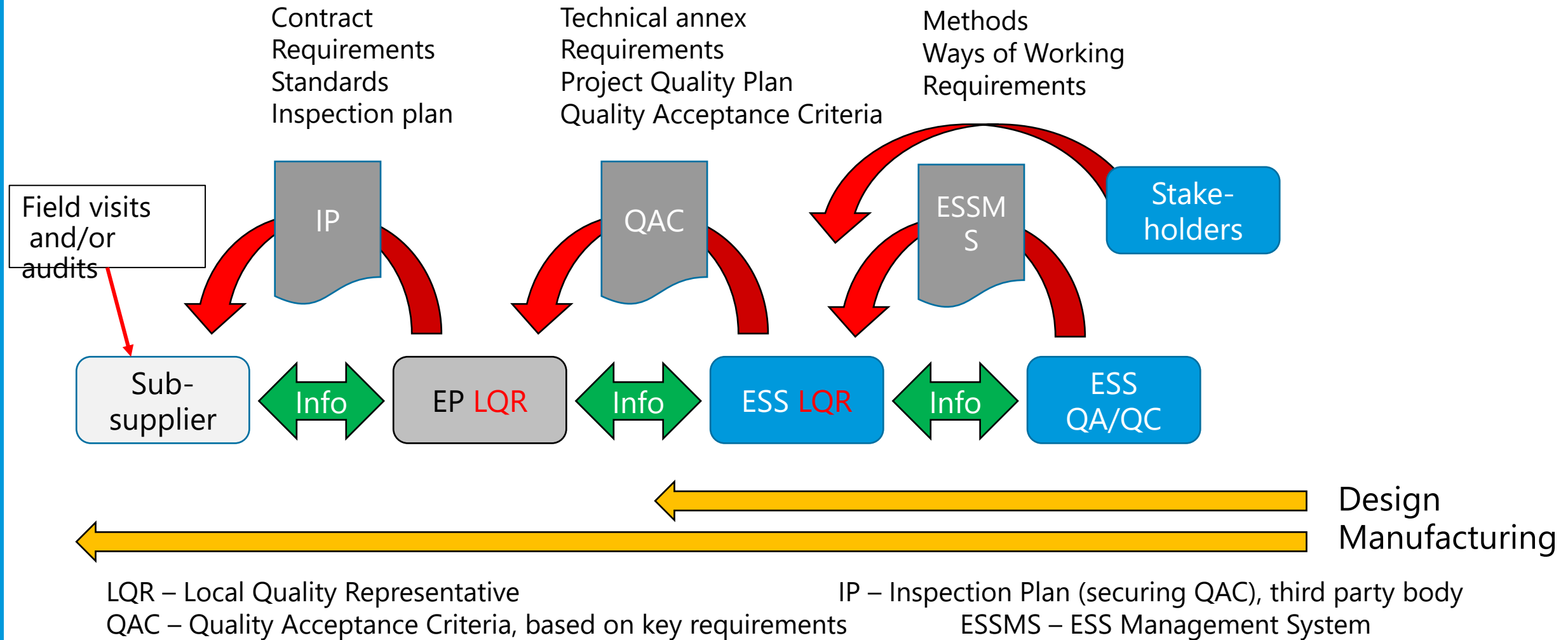
EET – ESS Executive Team  
QM – Quality Management  
LQC – Local Quality representative



# Information flow



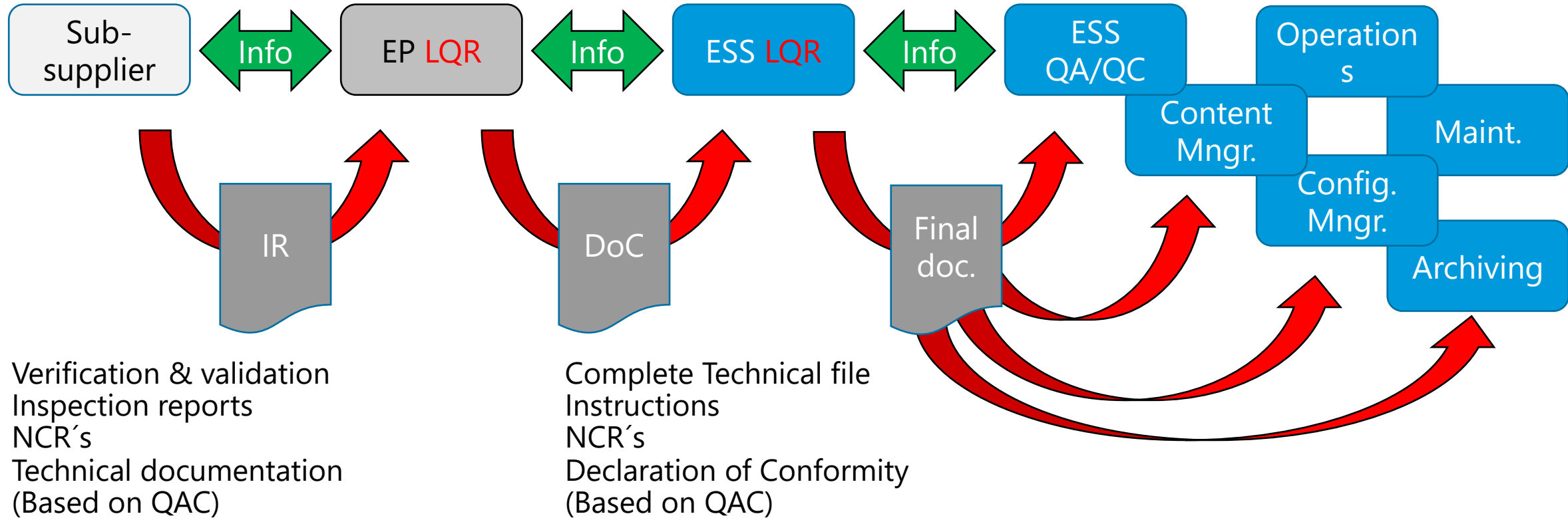
## ESS stakeholders to External Providers (EP)





# Information flow

## ESS stakeholders to External Providers (EP)



LQR – Local Quality Representative body

QAC – Quality Acceptance Criteria, based on key requirements

IR – Inspection Report (securing QAC), third party

DoC – Declaration of Conformity

# Thank YOU for your time!

Any Questions?

